

N1 QUICK START GUIDE

V 0.5

SAFEGUARDS

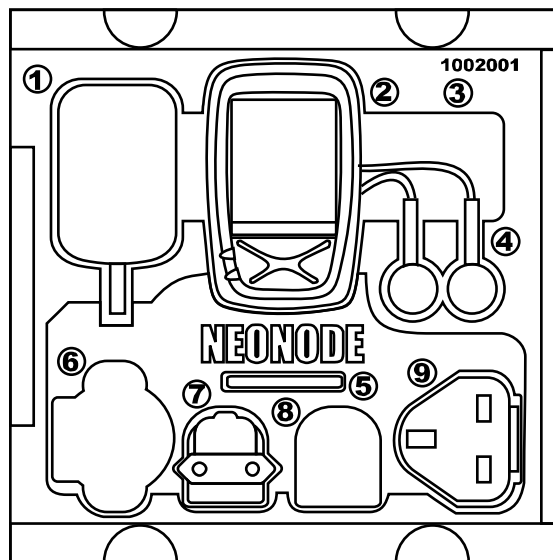
WARNING! READ BEFORE YOU USE!

- DO NOT INSERT NOR REMOVE SD CARD WHEN POWER IS ON (DOING SO MAY CAUSE DATA LOSS AND MALFUNCTION)
- DO NOT INSERT SIM CARD, WHEN POWER IS ON
- YOUR WARRANTY IS INVALIDATED IF YOU OPEN OR TAMPER WITH THE DEVICE'S OUTER CASING
- NO SUBSCRIPTION OR SIM CARD IS INCLUDED IN PACKAGE
- CHECK WWW.NEONODE.COM FOR LATEST INFORMATION

CONTENTS

- IN THE BOX 4
- N1 BASICS 5
- SETTING UP 6
- USING NENO 9
- MISCELLANEOUS 23

IN THE BOX

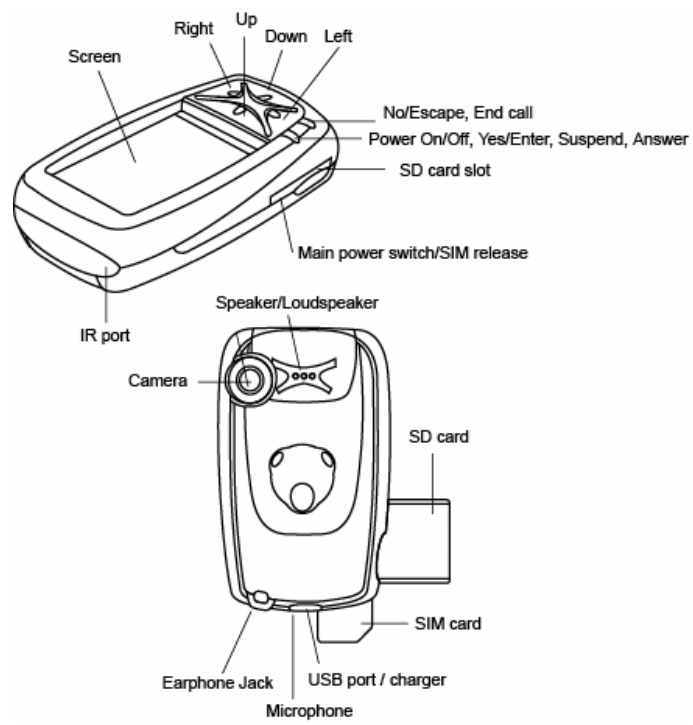


Before unpacking your N1, make sure the box contains

1. Charger
2. The N1
3. USB cable
4. Headset
5. SD Card
7. European plug for the charger
9. British plug for the charger.

Make sure you use the applicable plug suitable for the wall socket in your country. Numbers 6. and 8. are empty in your box.

N1 BASICS

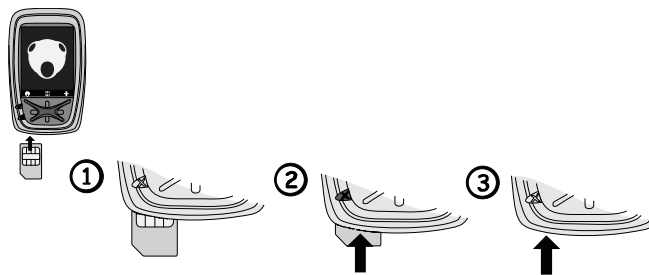


SETTING UP

INSERT THE SIM CARD

Follow these steps to insert your SIM card (SIM card not supplied in package):

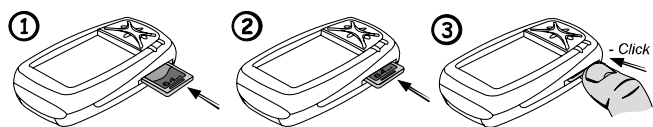
1. Make sure your SIM card is aligned according to the image below.
2. Insert the SIM card into the N1. Make sure the SIM card is fully inserted.



INSERT THE SD CARD

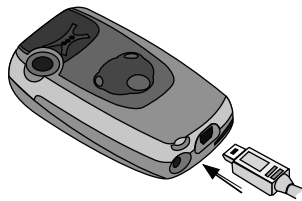
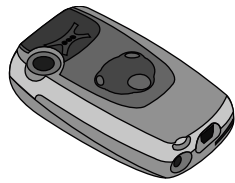
Follow these steps to insert your SD card:

1. Make sure your SD card is aligned according to the image below (facing text upwards).
2. Insert the SD card.
3. Make sure the SD card is fully inserted. (You will hear a click sound when the card is fully inserted).



SETTING UP

CHARGE THE BATTERY



You can charge your N1 in two ways:

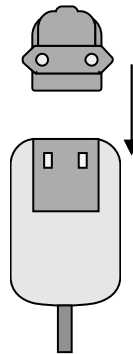
1. Insert the AC adapter into the N1, then the plug into the mains.
2. Insert the USB-cable into the N1, then into the PC.

When properly connected, the text CHARGING is visible on the N1 screen.

THE CHARGER

After choosing the right plug for your country, insert the plug into the charger.

Make sure the plug is fully inserted and that you have the right plug before starting to use the charger.



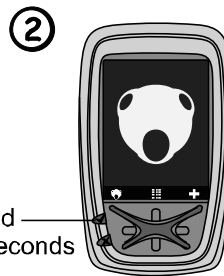
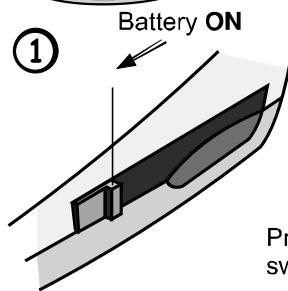
SETTING UP

SWITCHING ON



The ON/OFF switch is located on the left side of the N1, below the screen.

1. Make sure the battery switch is in the ON position.
2. Press the power button for about 2 seconds, wait for the screen to power up, then release the button.



ENTER PIN-CODE (IF APPLICABLE)

If your SIM card requires a PIN code, a keyboard will appear on the screen after the unit is started. Enter your PIN code and sweep over the screen from left to right (see Yes on page 14). When you see the status screen with clock, signal and battery symbol and the Neonode logotype, your N1 is ready to use.

NOTE! If you wait too long, the N1 automatic keylock feature activates keylock (the screen turns dark)
Look on next page to see how to unlock your unit.

USING NENO

SWITCHING OFF



The ON/OFF switch is located on the left side of the N1, below the screen.

1. Press the power button for about 2 seconds, wait for the screen to show "Shutting down...", then release the button.

KEYLOCK - LOCKING THE UNIT

Keylock is automatic on the N1, to save battery and to make sure no unintentional calls are made. If you want to lock your unit manually, use the "Lock" symbol in the start menu

KEYLOCK - UNLOCKING THE UNIT



The ON/OFF switch is located on the left side of the N1, below the screen.

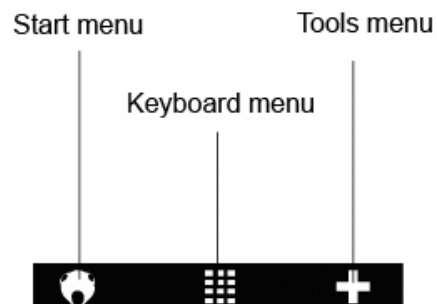
1. Press the power button once.
2. The text "Right sweep to unlock" appears on the screen. Sweep right to unlock your unit.

USING NENO

Using Neno is easy. You will have to learn a few basic moves, that you can use in every application. Always remember that only a light touch on the screen is needed, thanks to the patented zForce technology.

USING MENUS

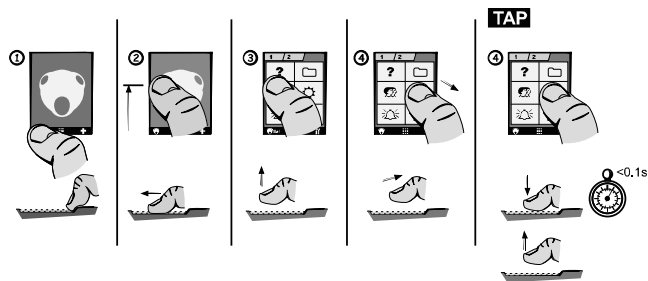
There are three basic menus on the N1; The start menu, the keyboard menu and the tools menu. Each menu is represented by a symbol in the lower part of the screen.



USING NENO



Start menu



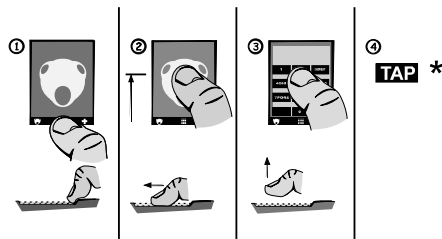
The start menu is where you find the applications that are installed on your N1:

1. Sweep from the Neonode symbol and up, on the screen.
2. The sweep shall be about half the height of the screen.
3. When lifting the finger, the start menu should have appeared. if not try sweeping again.
4. Choose the desired application.
5. Tap on the icon of the desired application to start that application.

USING NENO



Keyboard



The keyboard is used to enter numbers or text into your N1:

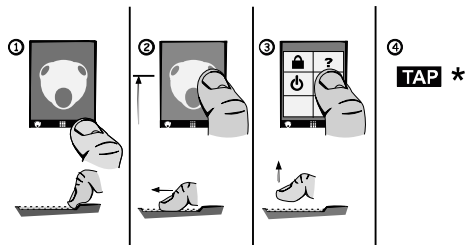
1. Sweep from the keyboard symbol on the middle-lowest part of the screen and up.
2. The sweep shall be about half the height of the screen.
3. When lifting the finger, the keyboard menu should have appeared. If not, try sweeping again.
4. Tap on the desired symbol.

* Tap is described in the start menu section.

USING NENO



Tools



The tools menu

1. Sweep from the tools symbol on the right-lowest part of the screen and up.
2. The sweep shall be about half the height of the screen.
3. When lifting the finger, the tools menu should have appeared. If not try sweeping again.
4. Tap on the desired key.

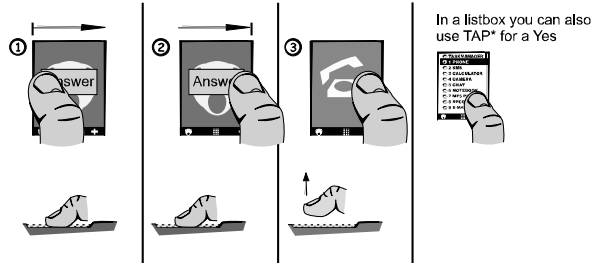
* Tap is described in the start menu section.

USING NENO



Yes

Right sweep or press the Yes button for Yes, More Enter



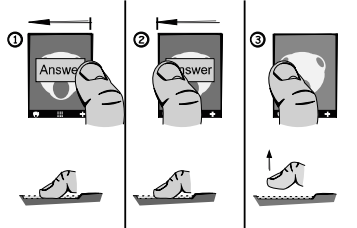
1. Make a right sweep (sweep from left to right over the screen).
2. The sweep shall be from side to side.
3. Make sure you lift the finger from the screen at the end of the sweep.

USING NENO



No

Left sweep or press No button for No, Cancel or Close



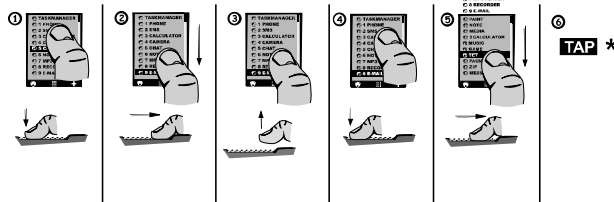
1. Make a left sweep (sweep from right to left over the screen).
2. The sweep shall be from side to side.
3. Make sure you lift the finger from the screen at the end of the sweep.

USING NENO



Text list

Scroll bar to wanted item and TAP* to run.



When navigating in a text list, a special technique is used:

1. Put your finger in the middle of the screen, you do not have to place the finger on top of the desired item in the text list.
2. Sweep downwards or upwards to scroll the text.
3. Lift your finger.
4. To continue scrolling, you repeat 1-3 until you reach the desired item in your text list.
5. This way you can scroll your way through large quantities of text.
6. Tap on the screen to select.

* Tap is described in the start menu section.

Please note! When scrolling upwards. Do not put down your finger in the menu zone.



To use the auto scroll function when scrolling through large quantities of text, do the sweep without lifting the finger at the top or at the bottom.

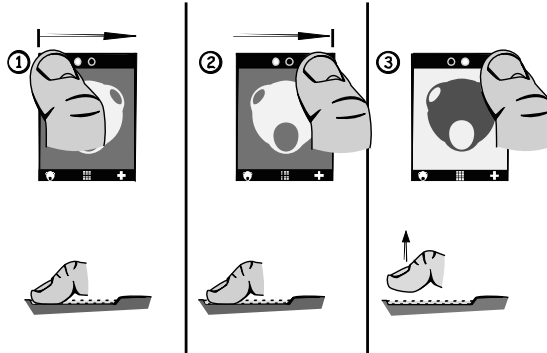
USING NENO

USING THE TAB FUNCTION



Tabs

Right sweep or left sweep on the top of the screen to switch tab.



When an application contains multiple views*, a tab is visible in the top of the screen.

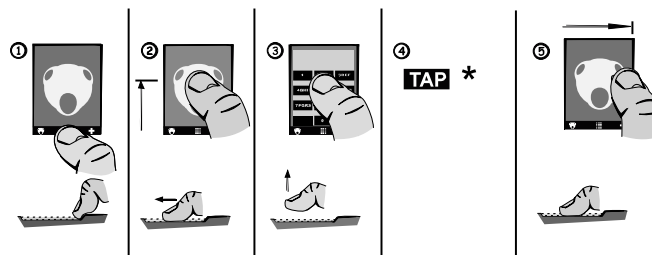
1. Put your finger in the top of the screen.
2. Sweep right or left to change between the different views.

* Examples of applications or views containing Tabs:

- Media Player
- Messaging

USING NENO

MAKING YOUR FIRST CALL



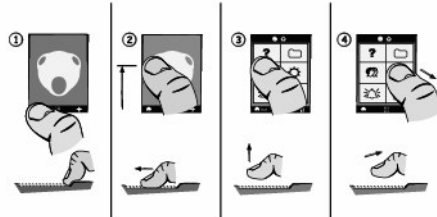
1. Sweep from the keyboard symbol on the middle-lowest part of the screen and up. The sweep shall be about half the height of the screen.
2. When lifting the finger, the keyboard menu should have appeared. If not, try sweeping again.
3. Tap (4.) on the desired numbers, to dial the number you want.
5. Sweep from left to right over the screen, to call the number.
6. Talk - (hold the unit with the back against your ear, screen facing away from you).
7. To hang up, sweep from right to left over the screen.

* Tap is described in the start menu section.

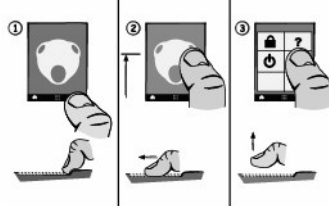
USING NENO

SENDING YOUR FIRST SMS

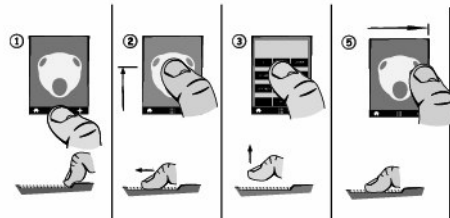
A) Sweep up the start menu, select the mail icon



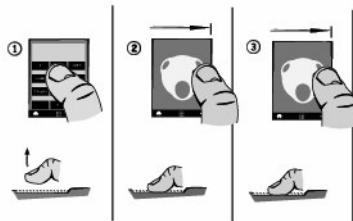
B) Sweep up the tools menu, select the mail icon with a (+) sign



C) Sweep up the keyboard to write (tap) number ,sweep right for OK.



D) Select message-text in the list, type your SMS, sweep right for OK
Then right again to send your SMS.

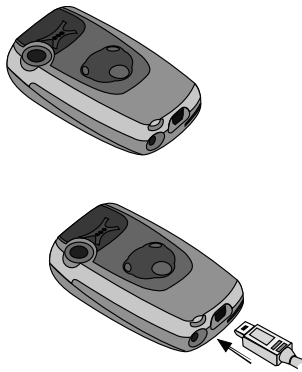


USING NENO

PLAYING YOUR FIRST MP3 OR VIDEO

Transfer the song you want to play from your PC to your N1. Use the supplied USB cable to access the SD card from a PC running Microsoft Windows 2000 or Microsoft XP.

1. Switch the N1 off.
2. Use the USB cord that is included in the package to connect the N1 to the PC.
3. Switch the N1 back on again. Wait until the text "CONNECTED" shows up on the screen.
4. The N1 will automatically show up on your computer as a Removable Disk.
5. On your computer, open the folder My Documents on the Removable Disk.
6. Place your song or video in desired folder.
7. Close all open folders.
8. Safely remove the USB.
9. Restart the N1.



9. To play the transferred music or video, select the player icon in the start menu.
10. When the media player is open, use the tab on top of the screen to change to the playlist view .
11. Use the tools menu to add music and make your first playlist.
12. Sweep left to return to the playlist view, click on the desired song to play.
13. Use the tab in the top of the screen to change to the player view to see information on the track being played. If you selected a video, that video will show in this view.

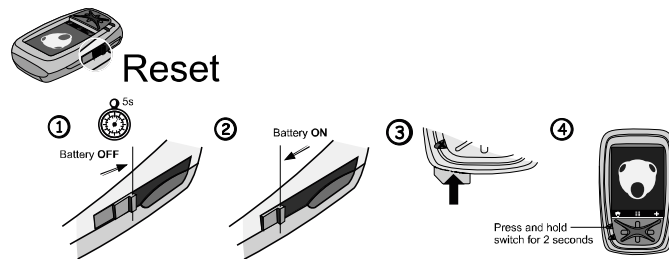
USING NENO

TAKING YOUR FIRST PHOTO

1. Select the camera icon in the start menu.
2. Click on the large button on the screen to take a photo.
3. To view your photos, use the tools menu, choose image viewer
4. View your photo
5. Your photos are saved on the SD card in the catalogue My Documents > My Photos

MISCELLANEOUS

RESETTING THE N1

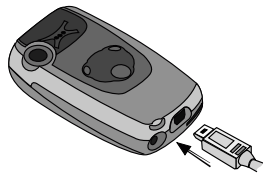
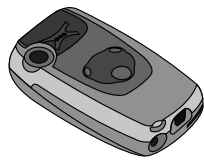


If you need to reset or reboot the N1:

1. Use the main power switch to switch off the N1.
2. Wait for 5 seconds then switch the unit back on again (using the main power switch).
3. Insert the SIM card.
4. Use the power switch (press for 2 seconds) to restart the N1.

MISCELLANEOUS

ACCESSING THE SD CARD FROM YOUR COMPUTER



The SD card can be accessed from a PC running Microsoft Windows 2000 or Microsoft XP.

1. Switch the N1 off.
2. Use the USB cord that is included in the package to connect the N1 to the PC.
3. Switch the N1 back on again. Wait until the text "CONNECTED" shows up on the screen.
4. The N1 will automatically show up on your computer as a Removable disk.

