
PAP4500DUO Disassemble Guide

1.1 Disassemble Guide

- (1) Remove battery cover



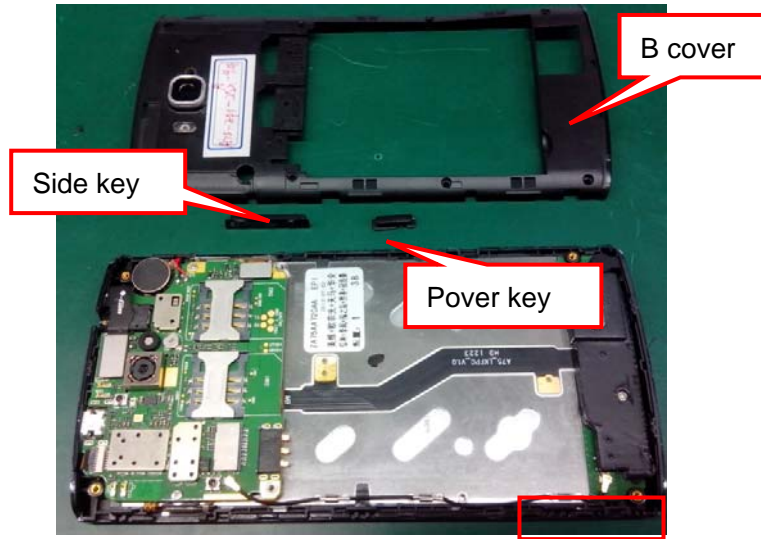
- (2) Remove screw

Remove 8 screws use screwdriver



- (3) Remove B cover

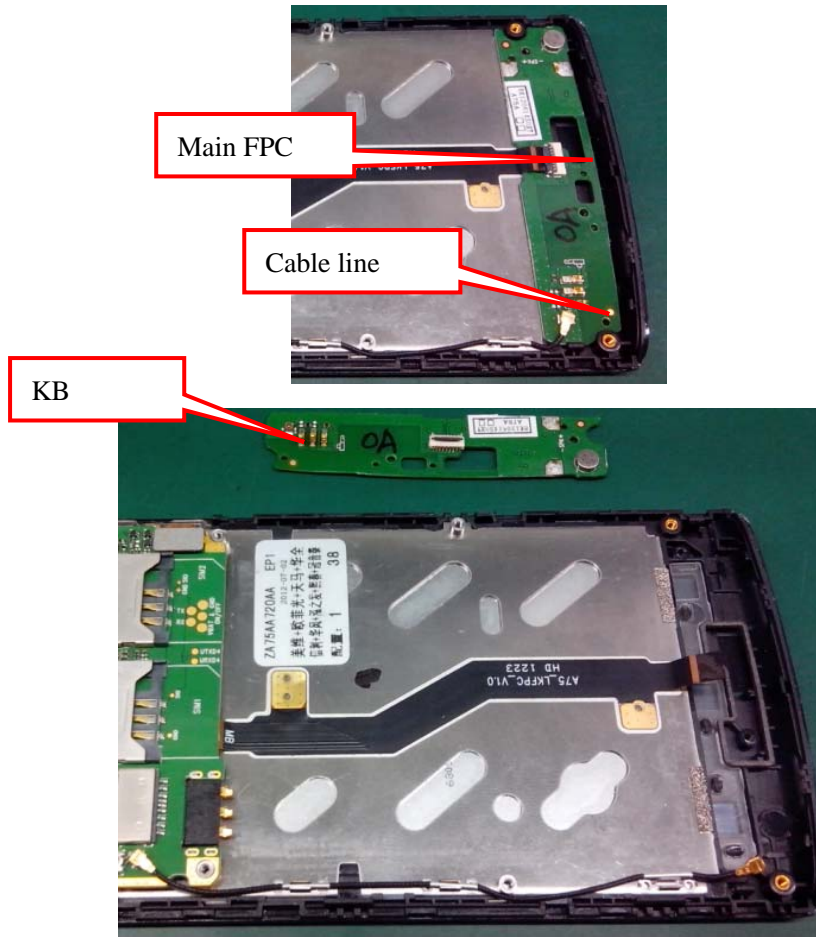
Along the gap between A and B cover disassemble handset, remove B cover



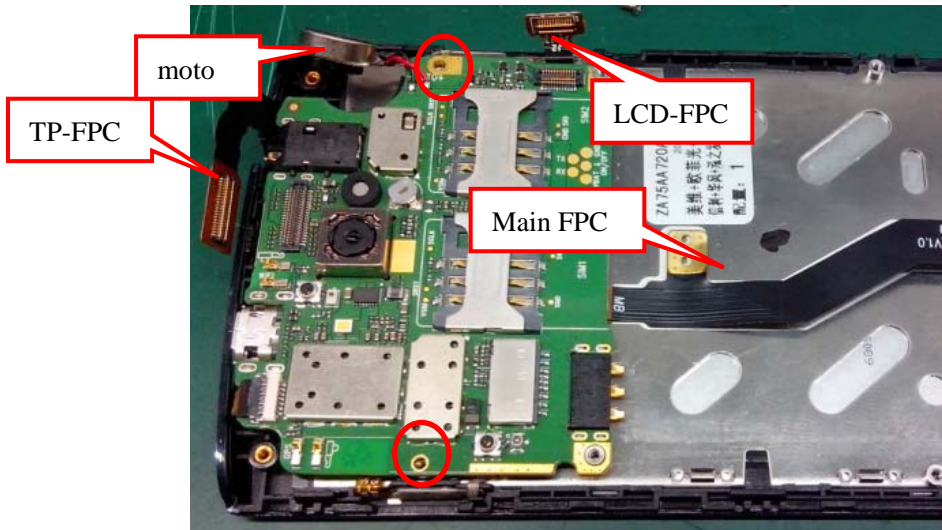
(4) Remove antenna, MIC cover

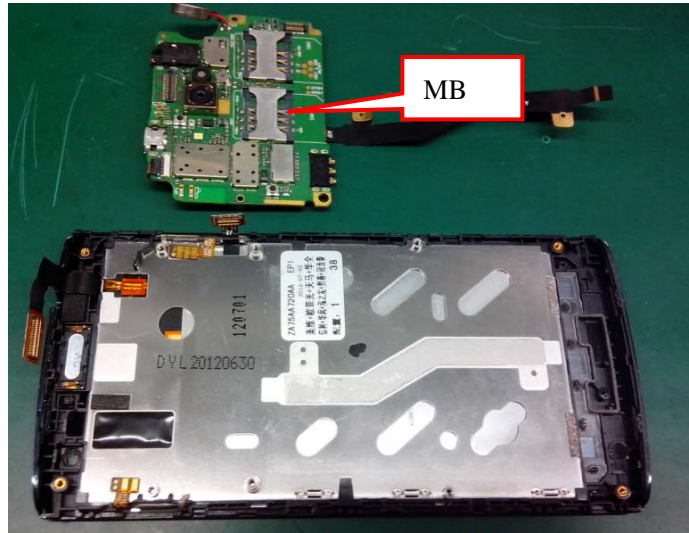


(5) Remove KB

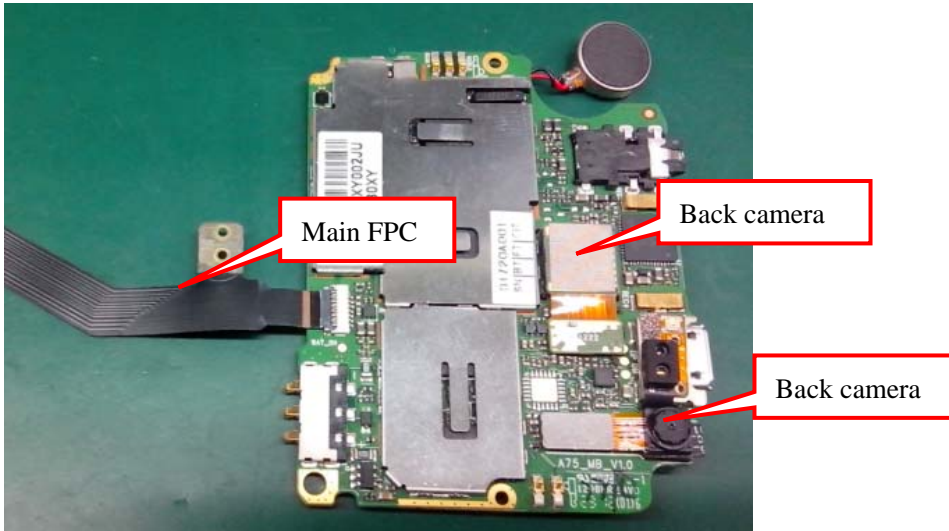


(6) Remove MB, cable line

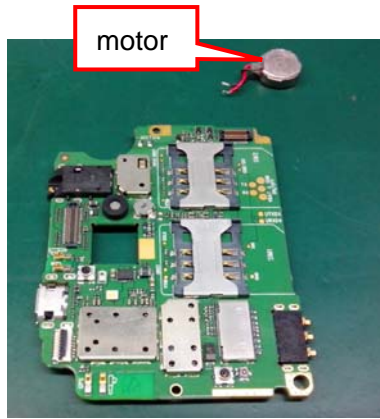




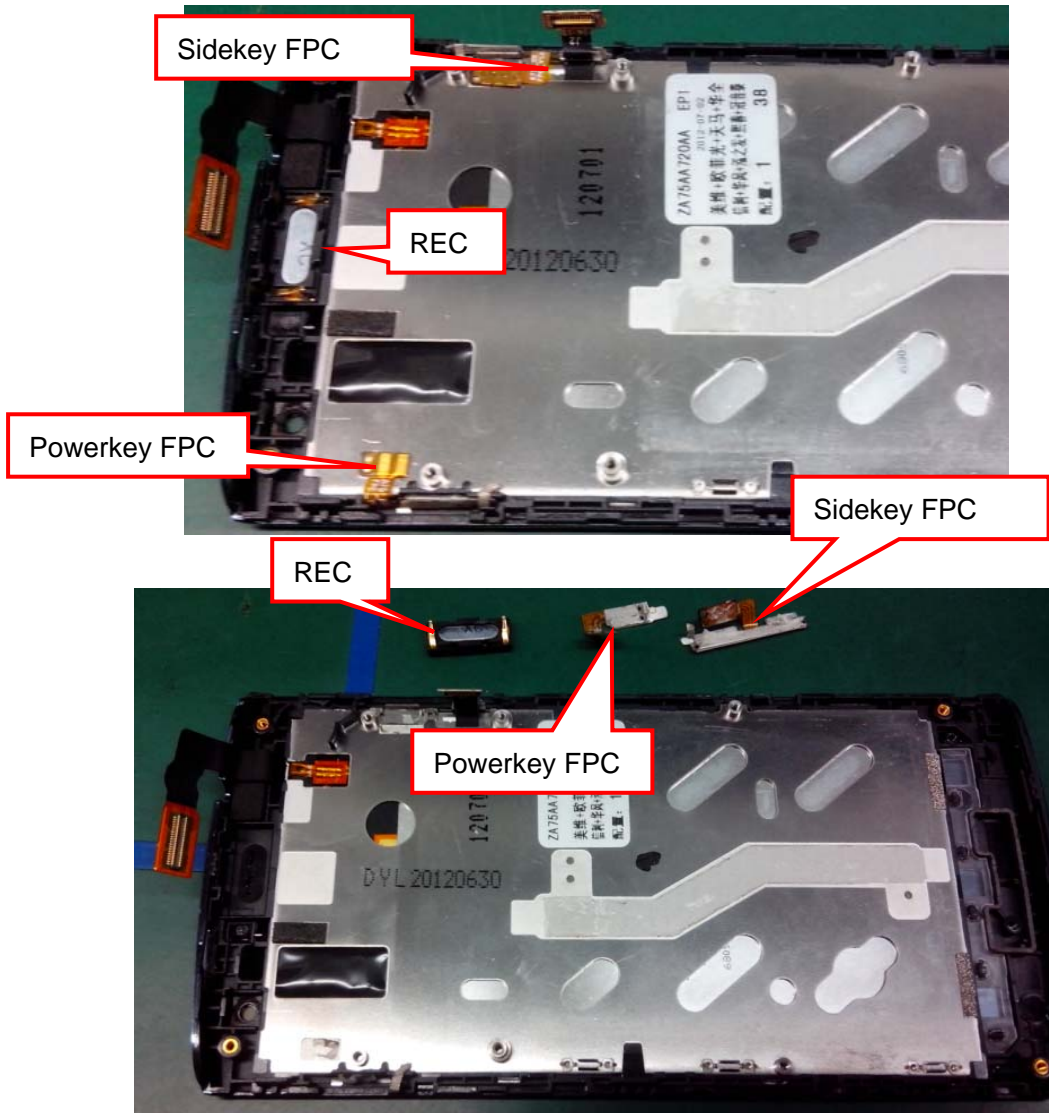
(7) Remove camera, main FPC



(8) Remove motor



(9) Remove receiver, side key FPC, power key FPC



(10) Remove CTP



(11) Remove LCD



After above steps, all parts has dismantled as below.



1.2 Assemble Guide

Assembly process and disassembly process basically instead.