

PAP5453DUO

service manual

content

- **1、 Product introduce.....p3-p4**
- **2、 Disassembly guidep5-p18**
- **3、 Repairing guidep19-p30**

Product introduce



Product introduce

Model :

Product size:

Platform: MT6582M, Quad-Core 1.3GHz

Memory: 8GB+1GB (Nand&sdram+RAM)

System: Android 4.4

Frequency band: WCDMA: 900/2100MHz, GSM: 900/1800MHz

Battery: 1700mAh

charger: Travel charger

USB cable: MICRO 5PIN

earphone: 3.5jack

LCD&TP: 4.5QHD IPS, resolution: 540×960 , Capacitance TP

Camera: 8.0M and 2.0M CMOS

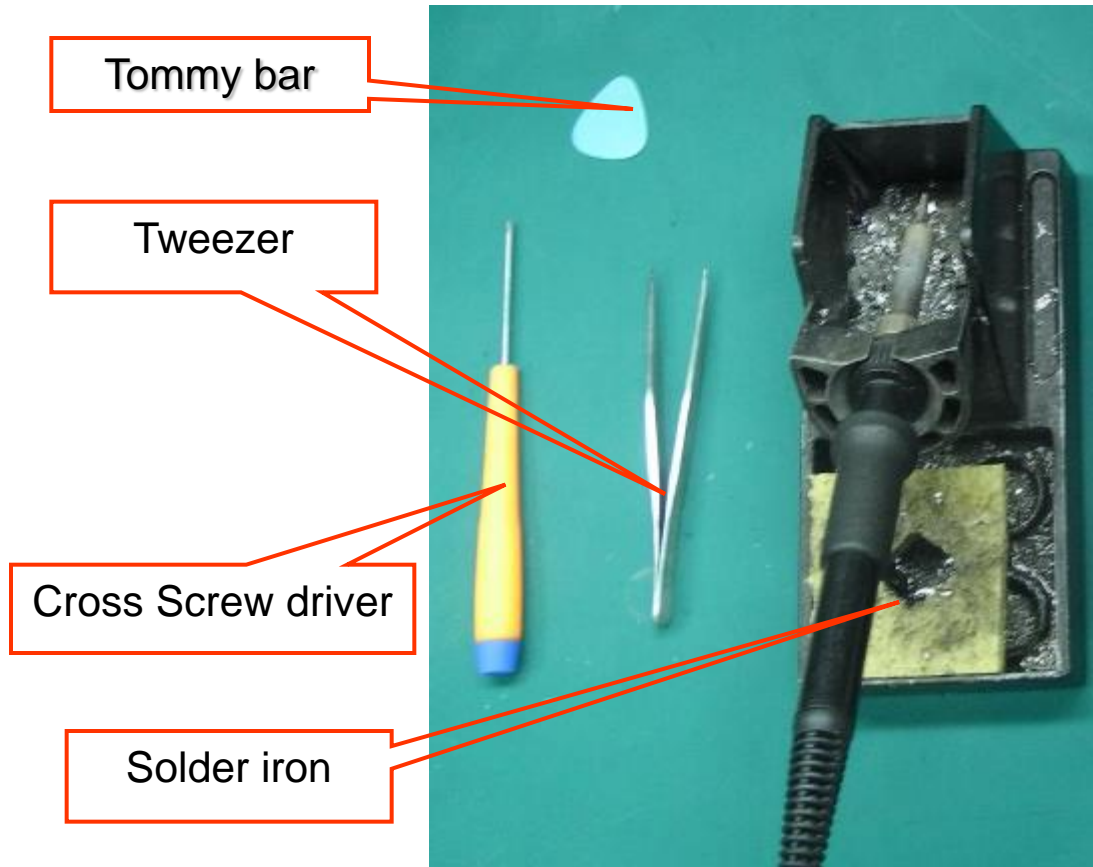
Support: GPS, BT4.0, WIFI, OTG, FM。

Support: 3D graphics accelerator, accelerator sensor, distance sensor, light feeling sensor。

Disassembly guide

1. Tools list

Tweezer /Cross screw driver/ Solder/Tommy bar/hot gun



Hot gun

Disassembly guide

2. Battery cover disassembly

open the battery cover



Disassembly guide

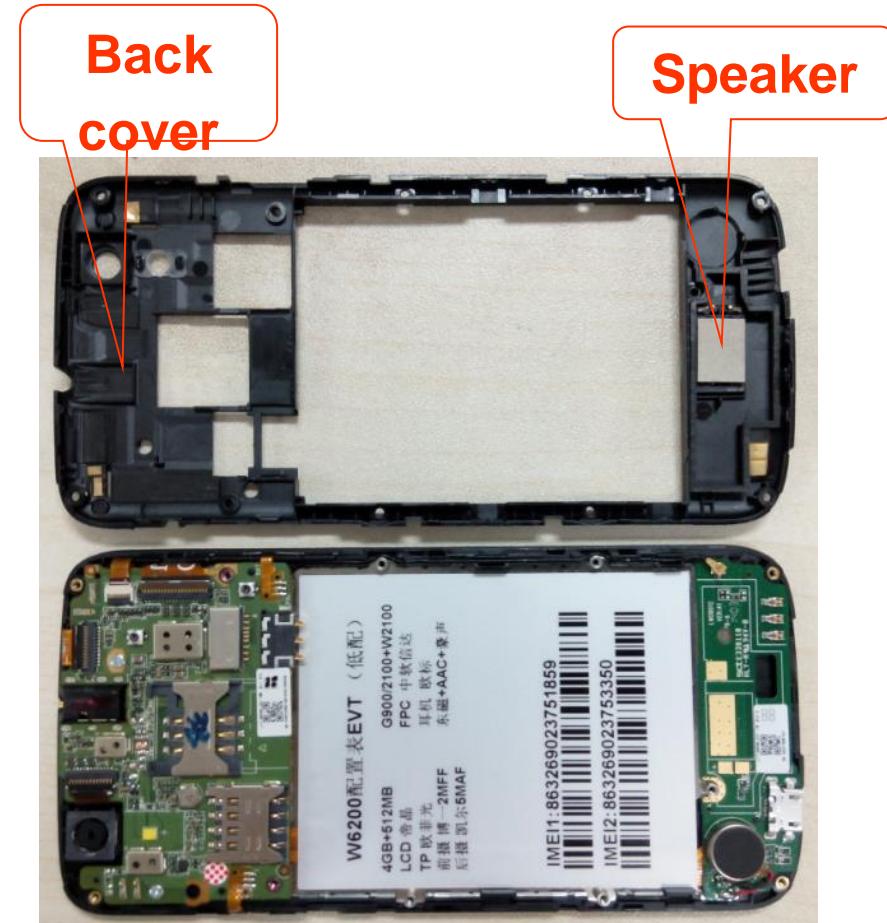
3. Back cover disassembly

1) Unscrew 11 screws in back cover



Disassembly guide

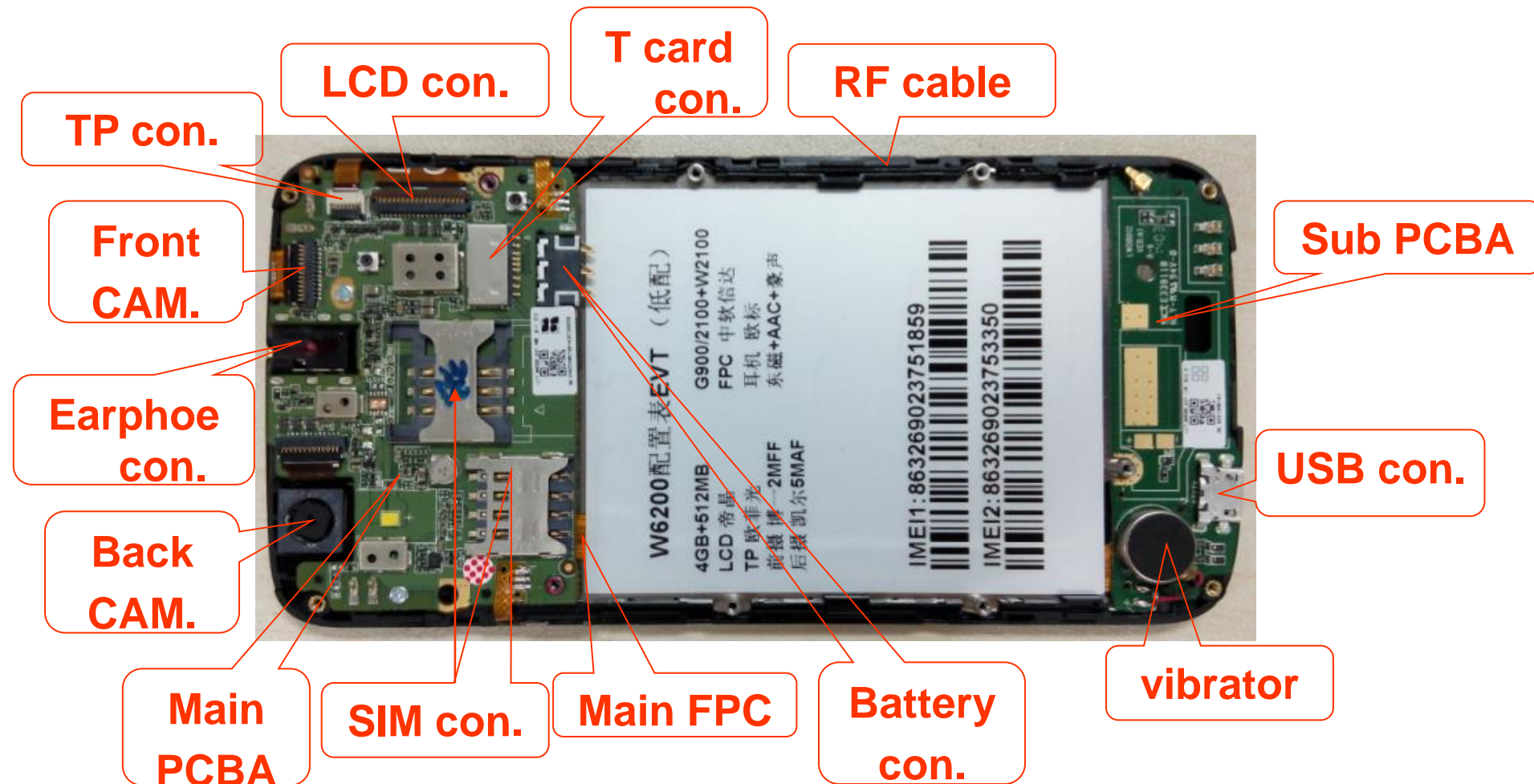
2) Disassemble back cover with Tommy bar



Disassembly guide

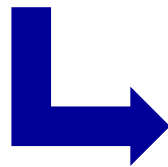
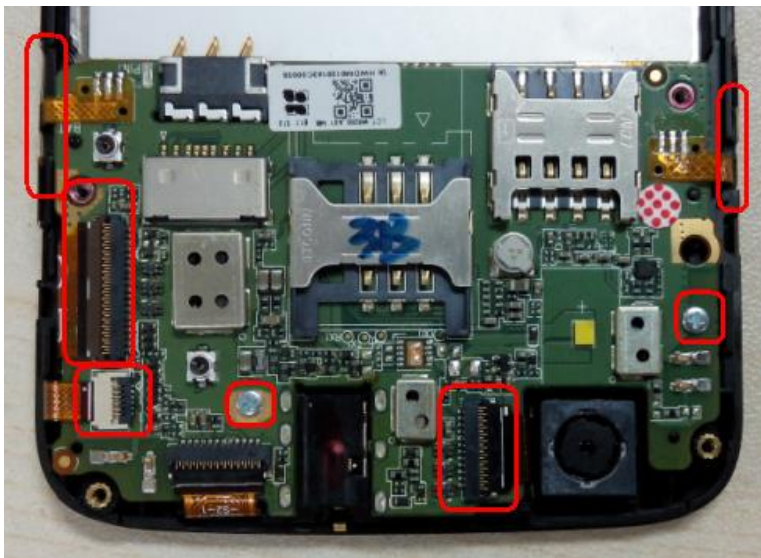
4. Main board and front cover disassembly

1) The main components of distribution



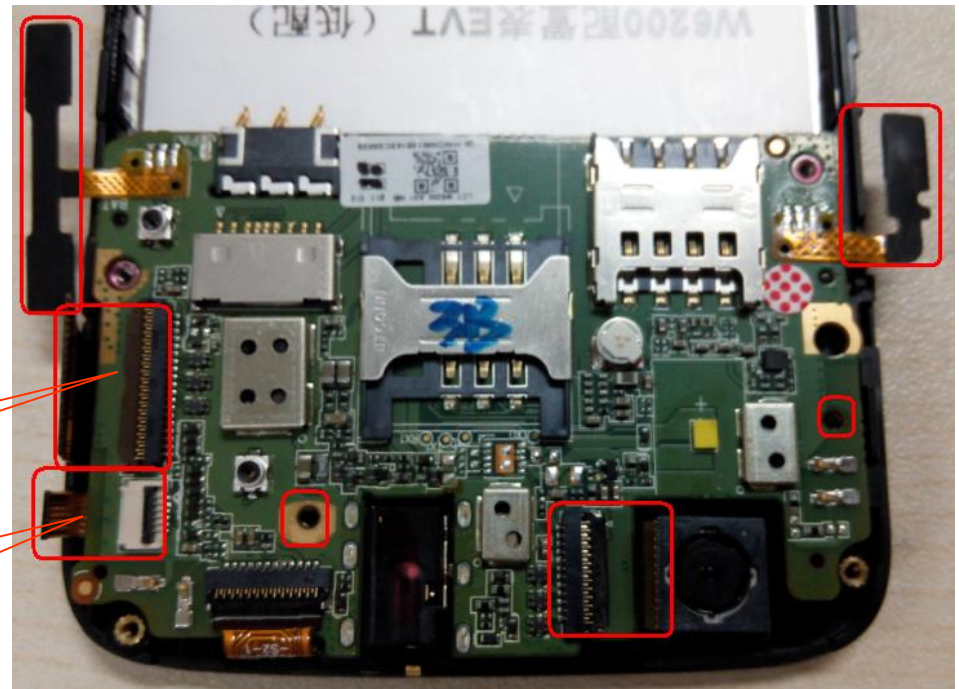
Disassembly guide

2) remove 2 screws and open the LCD con.& TP con. & Back camera CON. and Power key FPC



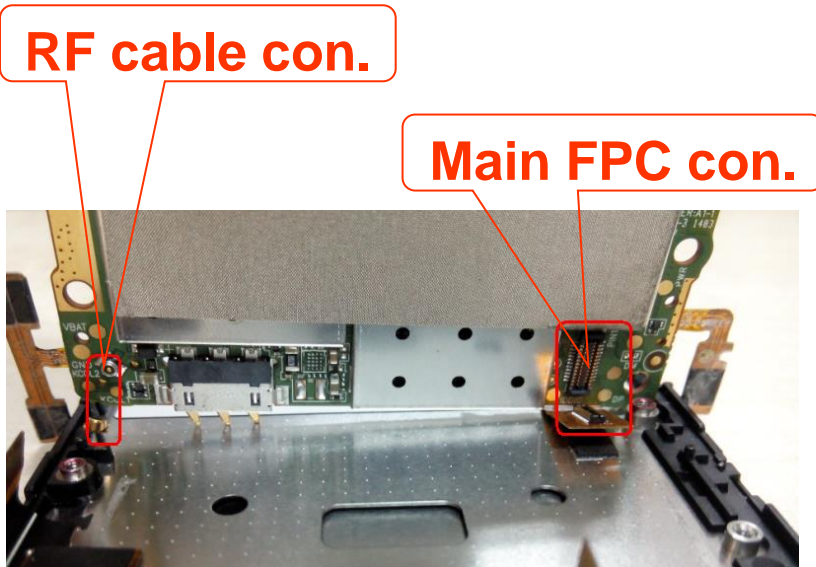
LCDcon.

TPcon.



Disassembly guide

3) open the main board and remove the RF cable con. And Main FPC con.



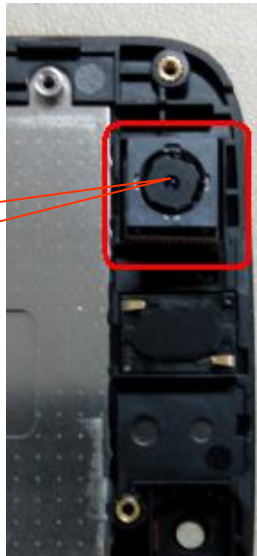
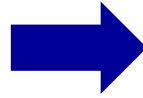
Disassembly guide

5. camera disassembly

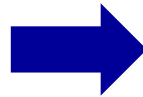
remove the Front camera and Back camera



Front cam.
CON.



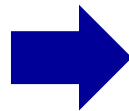
Back cam.



Disassembly guide

6. Sub PCBA disassembly

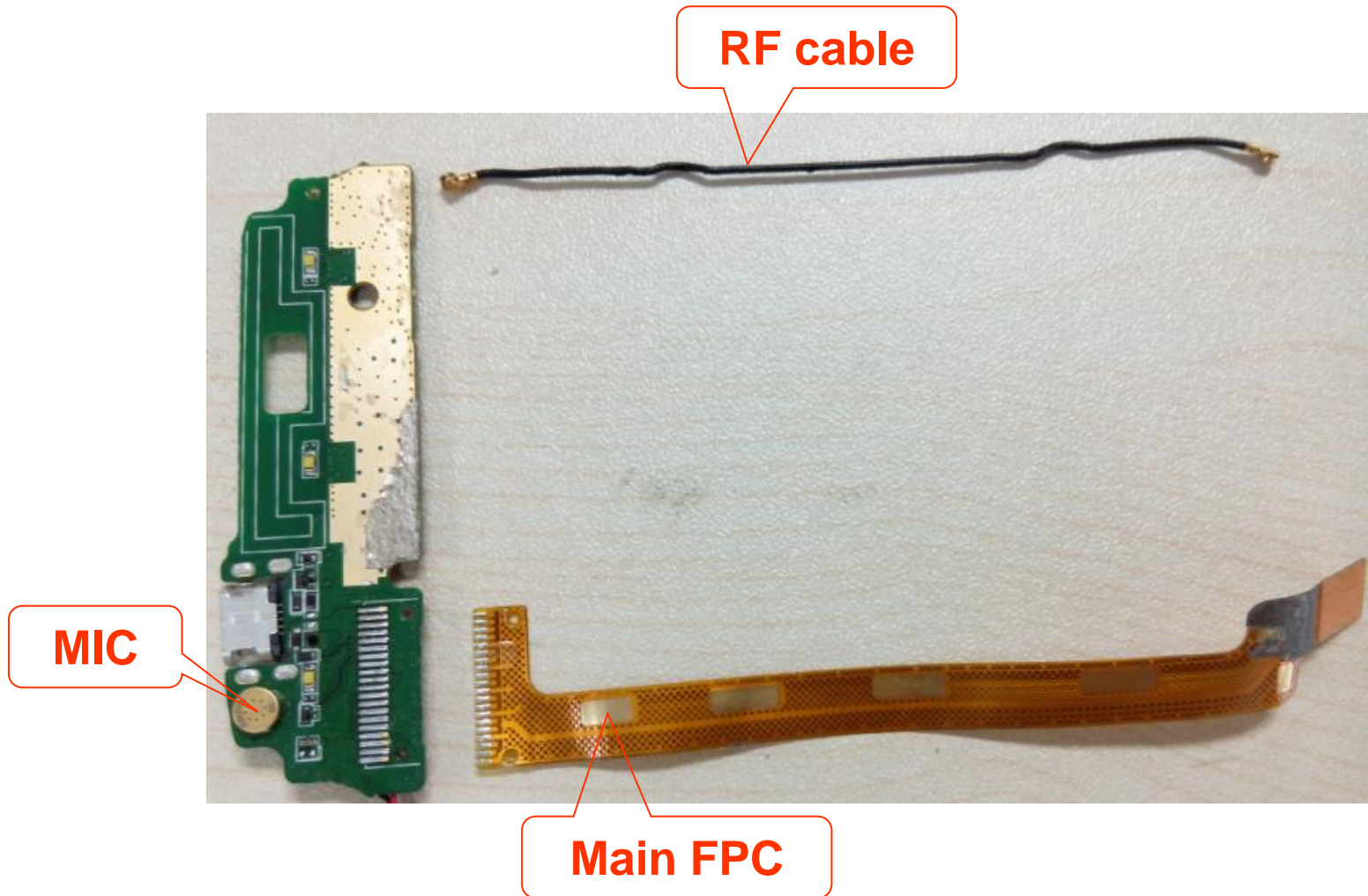
Open label, then open the Main FPC & RF cable and sub PCBA



Disassembly guide

7. Main FPC and RF cable disassembly

remove the main FPC and RF cable and MIC from the sub PCBA



Disassembly guide

8. receiver and Light sensor rubber sleeve & speaker disassembly
remove the receiver and speaker, as the FIG.11;

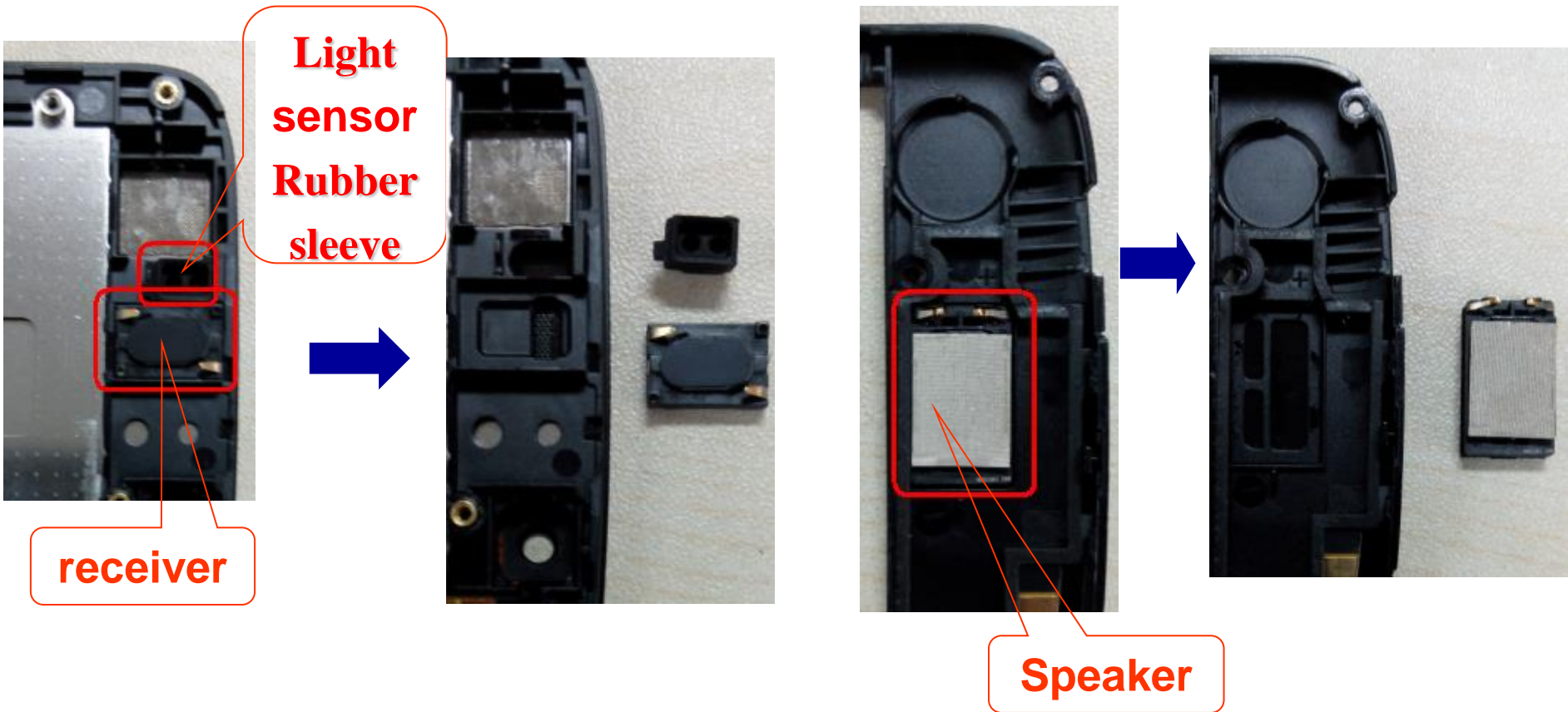


Fig.11

Disassembly guide

9. Power key FPC and the vibrator disassembly

remove the Power key FPC and the vibrator ,with the iron, as the fig.8;

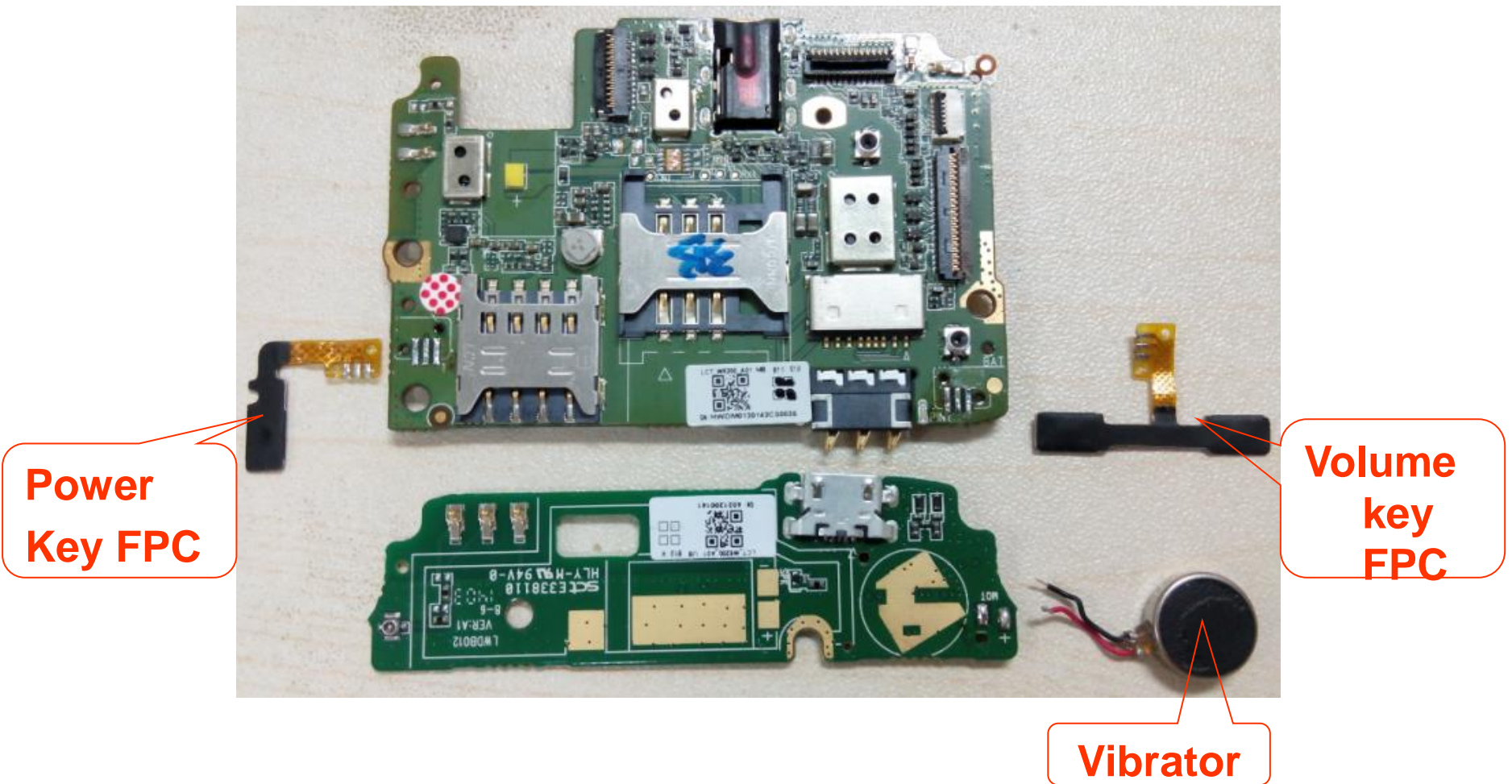
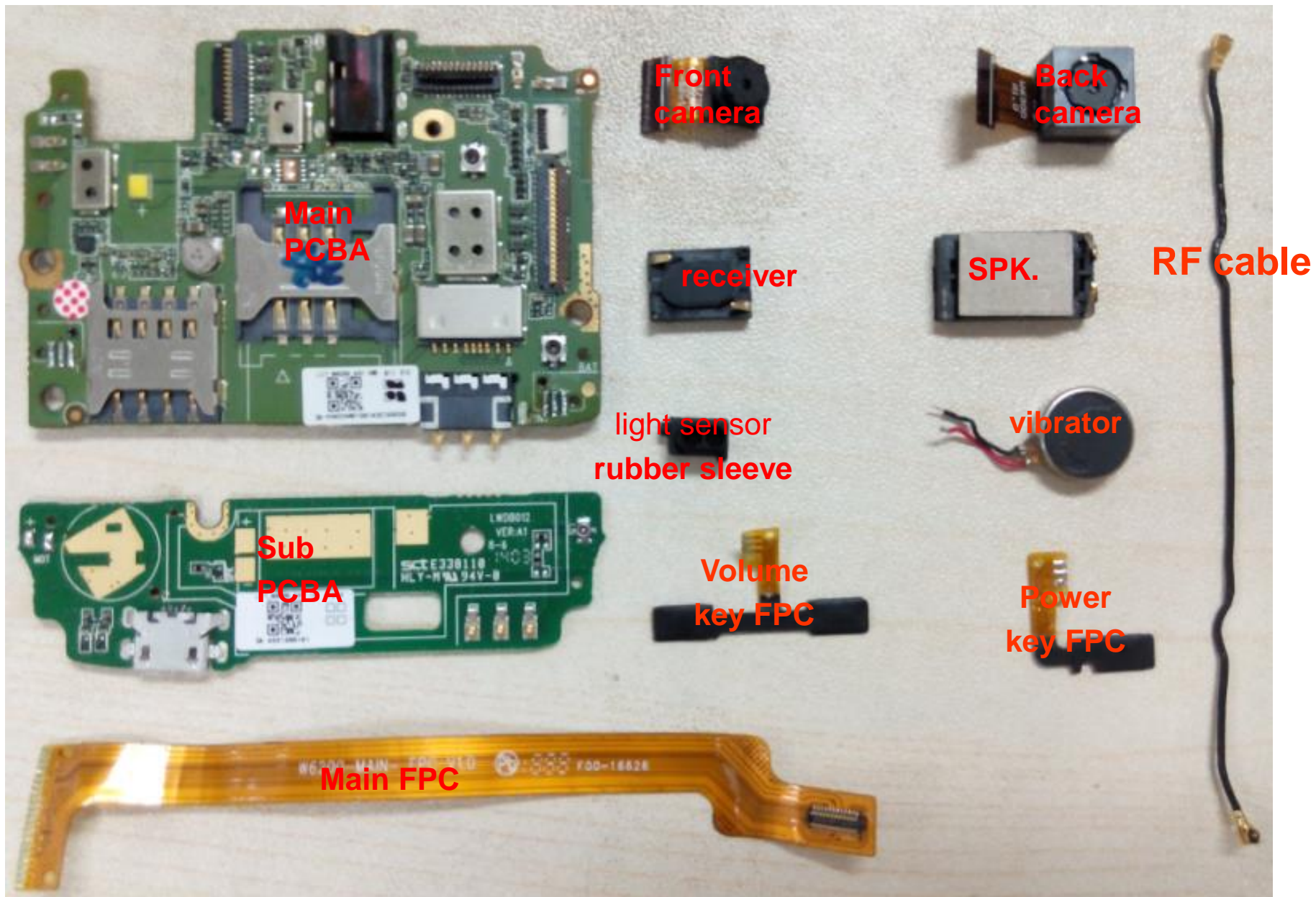


Fig.8

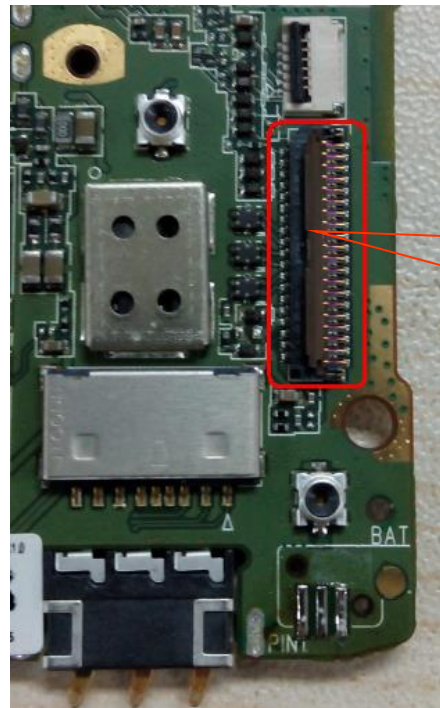




Repairing guide

1. LCD

- a. Check if the SW is correct, otherwise to upgrade the SW;
- b. Check the LCD if is ok, otherwise change a new LCD;
- c. If that the LCD loose, re-assemble the LCD and test;
- d. Checking the LCD connector if is ok, otherwise re-solder it or change a new one;
- e. Checking the circuit around the LCD connector.

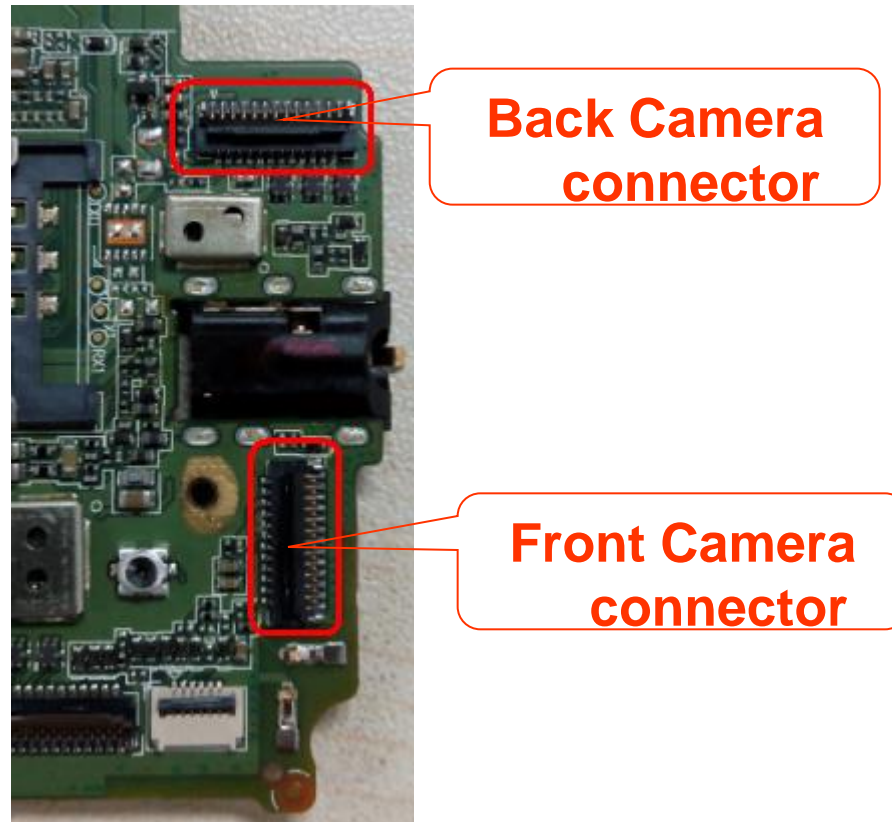


**LCD
connector**

Repairing guide

2. Camera

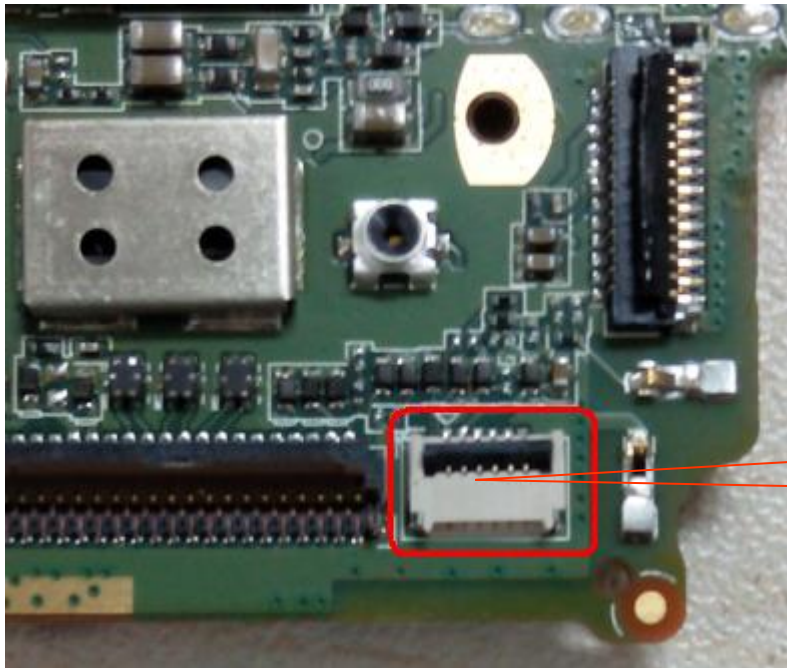
- a. Checking the camera is assemble ok, re-assemble the camera and test;
- b. Using the good camera to do cross test, it can check if the camera is ok;
- c. Checking the camera connector if is ok as below picture, otherwise to re-solder or change a new one;
- d. Checking the circuit around the camera connector.



Repairing guide

3. TP

- a. Checking the SW and upgrade the SW;
- b. Checking the FPC of TP and re-assemble it;
- c. Using the good TP to do cross test;
- d. Checking the TP connector, otherwise re-solder or change a new one;
- e. Checking the circuit around the TP connector.

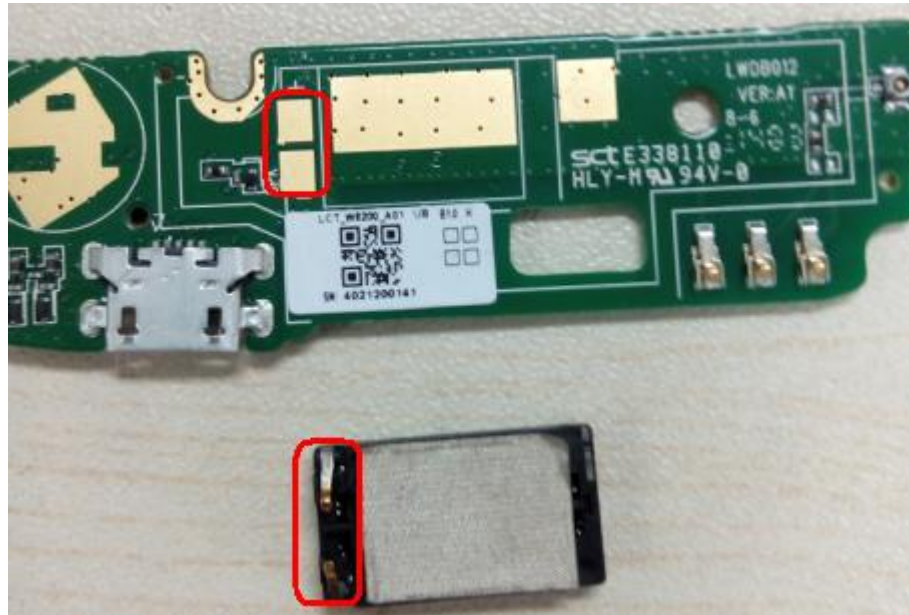


TP Connector

Repairing guide

4. Ring

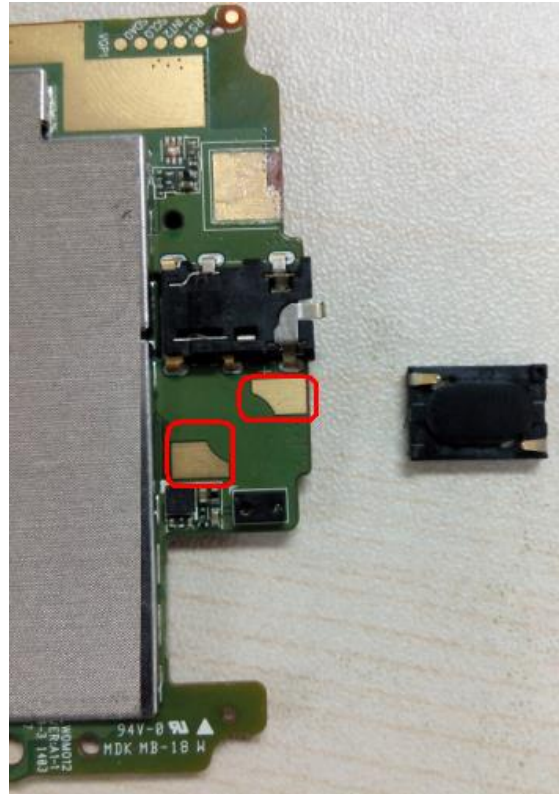
- a. Checking the shrapnel of speaker if is ok;
- b. Checking the resistance of speaker if is ok, otherwise to change a new one;
- c. Checking the FPC if is ok;
- d. Checking SPK-FPC if connector with sub-board is ok.



Repairing guide

5.receiver

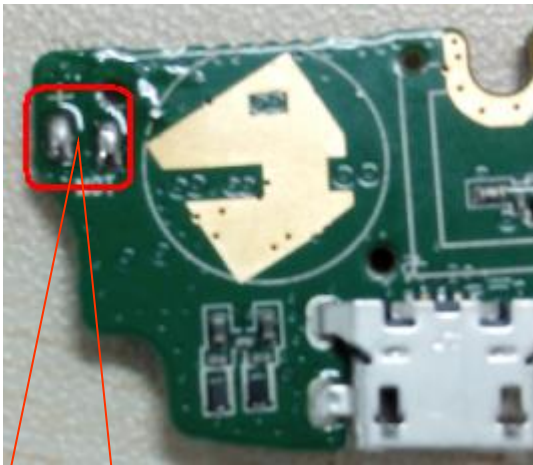
- a. Checking the shrapnel of receiver if is ok;
- b. Checking the resistance of receiver if is ok, otherwise to change a new one;
- c. Checking the connector point on the main board if is ok, as below picture;
- c. Checking the receiver circuit if is ok.



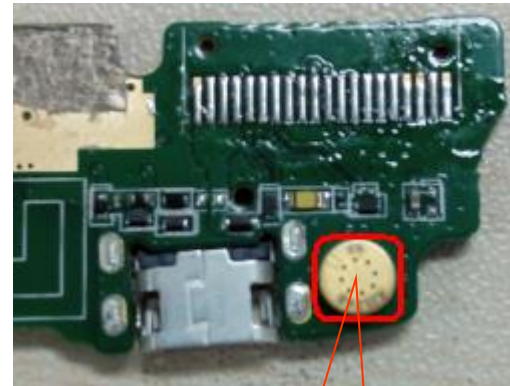
Repairing guide

6.MIC and Vibrator

- a. Checking the MIC and Vibrator is cold soldering, re-solder it;
- b. Change the MIC and Vibrator;
- c. Checking the circuit of MIC and Vibrator;
- d. Checking the FPC if connect ok.



Vibrator CON.

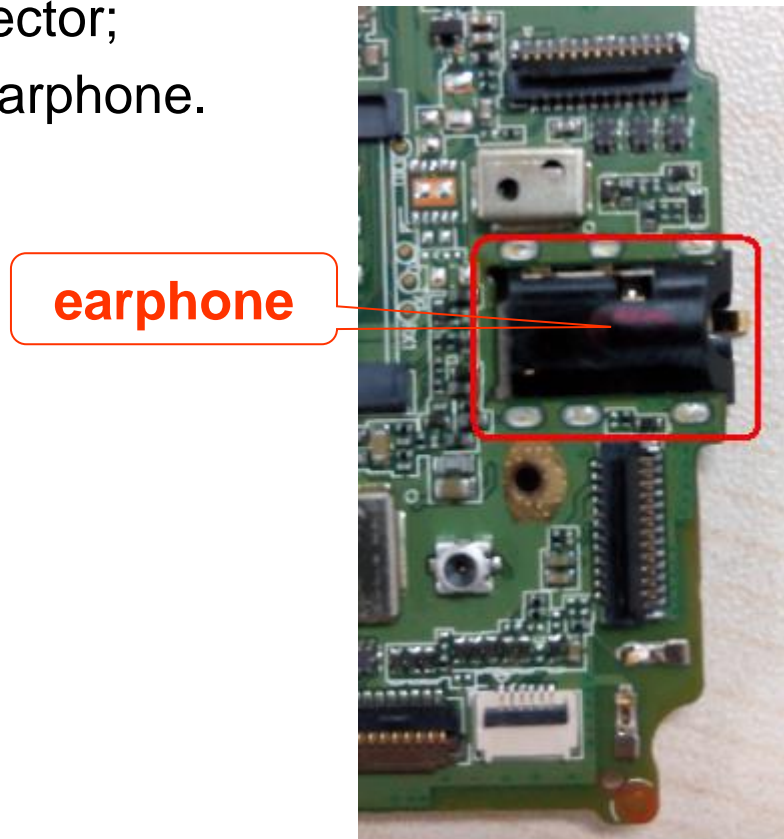


MIC

Repairing guide

7. Earphone

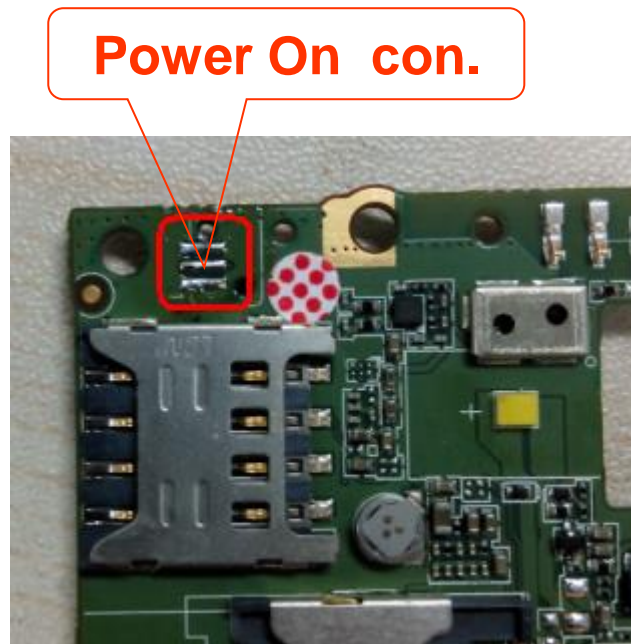
- a. Checking the shrapnel of earphone if is ok;
- b. Checking the connector point on the main board if is ok, as below picture;
- c. Change earphone connector;
- c. Checking the circuit of earphone.



Repairing guide

8.No Power On

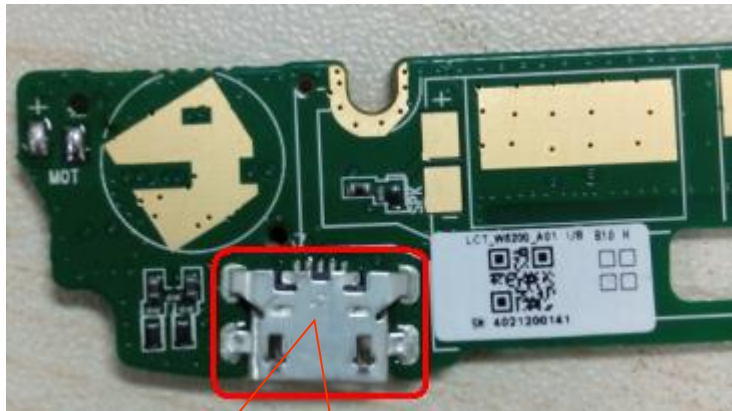
- a. Checking the voltage of battery if is 3.8-4.2V and connect ok;
- b. Upgrade the SW;
- b. Checking the power on key and circuit around it.;



Repairing guide

9.No charging

- a. Checking the voltage of battery if is over 3.4V;
- b. Checking the charger and USB cable if is ok;
- c. Checking the USB connector and circuit if is ok.

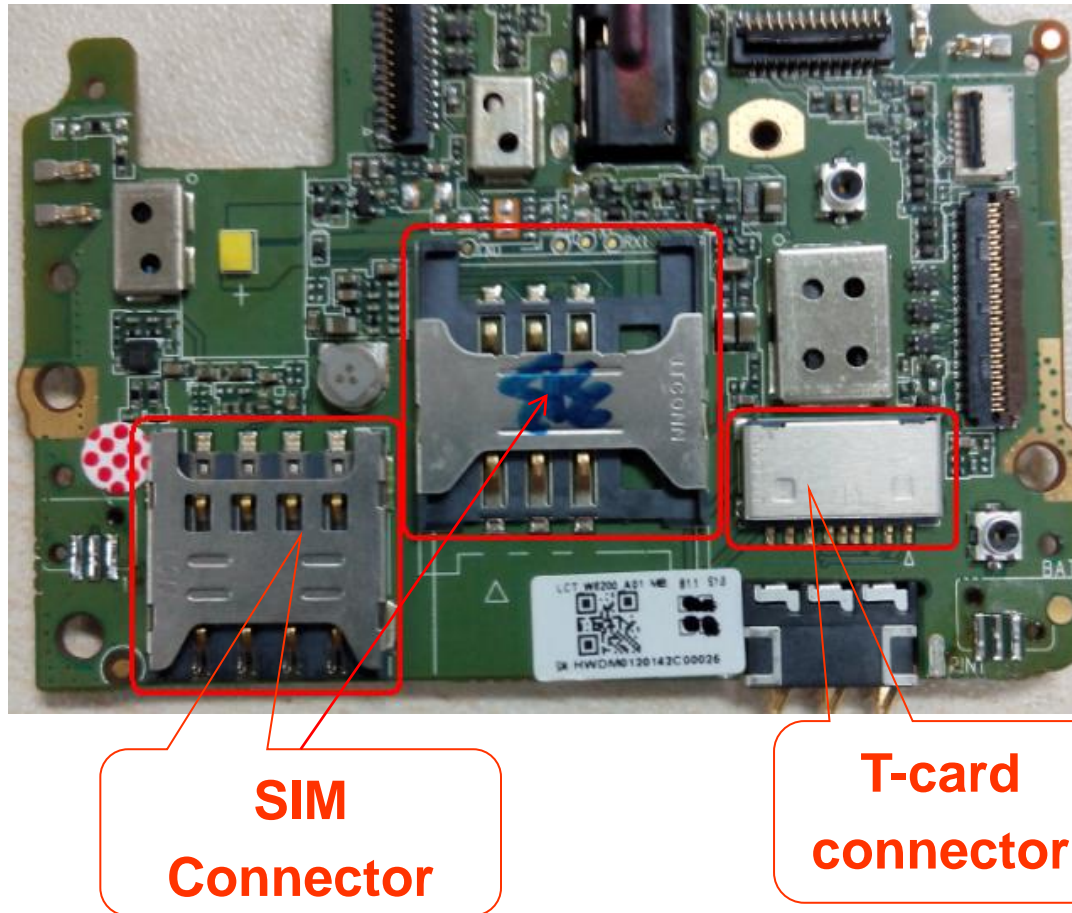


USB Connector

Repairing guide

10.No SIM card and No memory card

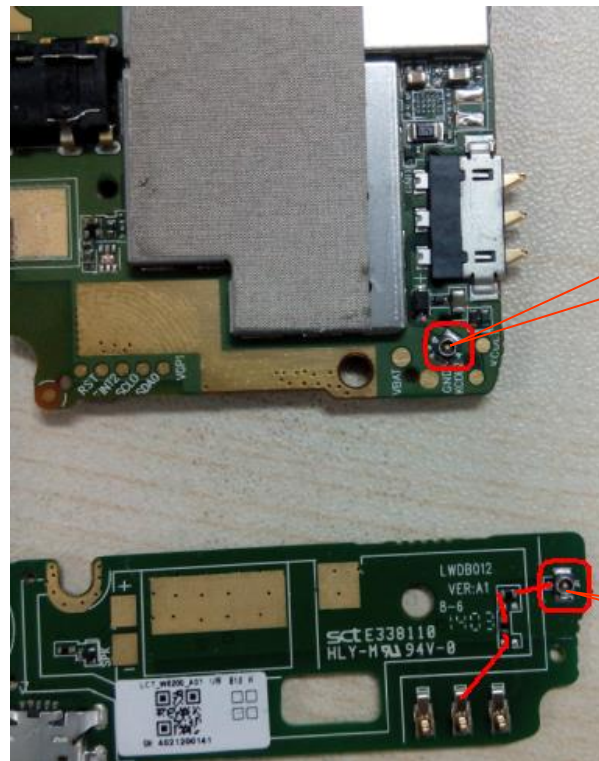
- a. Checking the connector of T –card and SIM card;
- b. Change the connector of T –card and SIM card;



Repairing guide

11.Signal

- a. Checking RF line if that is broken;
- b. Checking RF line assemble if is ok;



RF connector

**Sub-board RF
connector**

End

Q&A